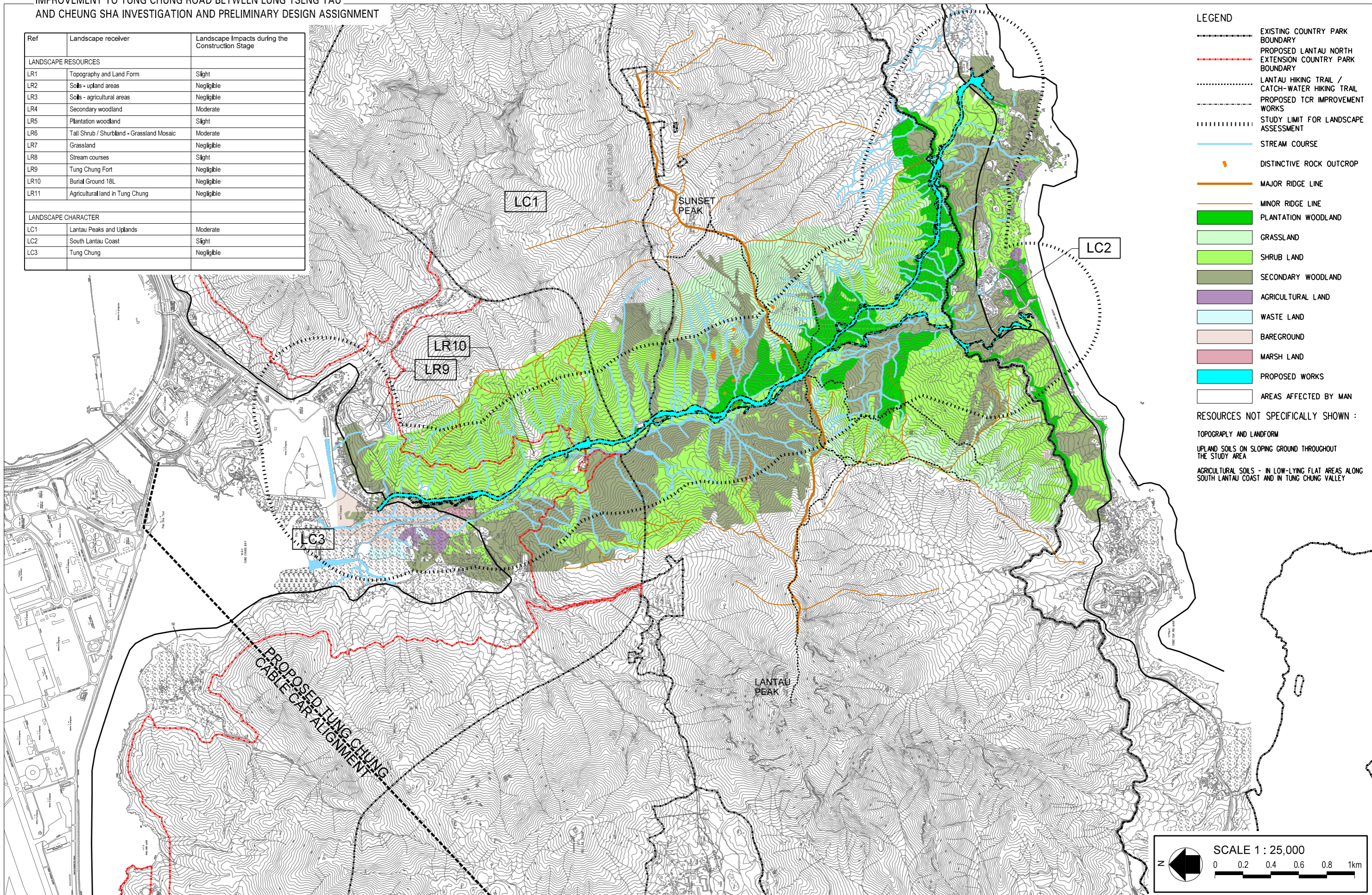


IMPROVEMENT TO TUNG CHUNG ROAD BETWEEN LUNG TSENG TAU AND CHEUNG SHA INVESTIGATION AND PRELIMINARY DESIGN ASSIGNMENT

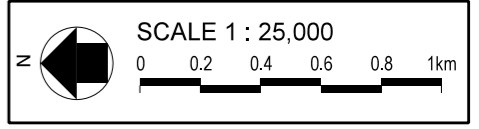
Ref	Landscape receiver	Landscape Impacts during the Construction Stage
LANDSCAPE RESOURCES		
LR1	Topography and Land Form	Slight
LR2	Soils - upland areas	Negligible
LR3	Soils - agricultural areas	Negligible
LR4	Secondary woodland	Moderate
LR5	Plantation woodland	Slight
LR6	Tall Shrub / Shrubland - Grassland Mosaic	Moderate
LR7	Grassland	Negligible
LR8	Stream courses	Slight
LR9	Tung Chung Fort	Negligible
LR10	Burial Ground 18L	Negligible
LR11	Agricultural land in Tung Chung	Negligible
LANDSCAPE CHARACTER		
LC1	Lantau Peaks and Uplands	Moderate
LC2	South Lantau Coast	Slight
LC3	Tung Chung	Negligible



- LEGEND**
- EXISTING COUNTRY PARK BOUNDARY
 - - - - - PROPOSED LANTAU NORTH EXTENSION COUNTRY PARK BOUNDARY
 - LANTAU HIKING TRAIL / CATCH-WATER HIKING TRAIL
 - - - - - PROPOSED TCR IMPROVEMENT WORKS
 - STUDY LIMIT FOR LANDSCAPE ASSESSMENT
 - STREAM COURSE
 - DISTINCTIVE ROCK OUTCROP
 - MAJOR RIDGE LINE
 - MINOR RIDGE LINE
 - PLANTATION WOODLAND
 - GRASSLAND
 - SHRUB LAND
 - SECONDARY WOODLAND
 - AGRICULTURAL LAND
 - WASTE LAND
 - BAREGROUND
 - MARSH LAND
 - PROPOSED WORKS
 - AREAS AFFECTED BY MAN

RESOURCES NOT SPECIFICALLY SHOWN :

- TOPOGRAPHY AND LANDFORM
- UPLAND SOILS ON SLOPING GROUND THROUGHOUT THE STUDY AREA
- AGRICULTURAL SOILS - IN LOW-LYING FLAT AREAS ALONG SOUTH LANTAU COAST AND IN TUNG CHUNG VALLEY



CONSTRUCTION IMPACTS ON LANDSCAPE CHARACTER AREAS AND LANDSCAPE RESOURCES